

**PUSH IT**

Moderately bright hip-hop

4

1 5 *f* 6 7 8

9 *f* 10 11 12 13

14 15 16 *mf* 17 18

19 20 21 22 23 24

25 *f* 26 27 28

29 30 31 32 33 *ff*

**SHUT UP AND DANCE**

Words and Music by  
 Ryan McMahon, Benjamin Berger,  
 Nicholas Petricca, Sean Waugaman,  
 Kevin Ray and Eli Maiman  
 Arranged by Doug Adams

Bright rock

3

1 2 *f* 3 4 5 6 7

8 9 10 11 12 *mf* 13 14 15

16 17 18 19 20 21 22

23 24 *f* 25 26 27

28 29 30 31 32 33 *mf* 34

35 36 37 38 39 40

41 42 43 44 45 46 *ff*

# HTMS Fight Song

Trumpet in B $\flat$  2

Musical score for the HTMS Fight Song, Trumpet in B $\flat$  2. The score is written in 2/4 time and consists of 34 measures. The key signature has two flats (B $\flat$  and E $\flat$ ). The melody is composed of eighth and quarter notes, with some measures containing rests. The score is divided into three systems: measures 1-11, 12-22, and 23-34. The final measure (34) ends with a double bar line.

Trumpet in B $\flat$  2

## Watch Me... Whip

Musical score for the piece "Watch Me... Whip", Trumpet in B $\flat$  2. The score is written in 4/4 time and consists of 10 measures. The key signature has two flats (B $\flat$  and E $\flat$ ). The melody is composed of eighth and quarter notes, with some measures containing rests. The score is divided into three systems: measures 1-4, 5-9, and 10. The final measure (10) ends with a double bar line.

## Land of 1000 Dances

Trumpet in B $\flat$  2

Musical score for the piece "Land of 1000 Dances", Trumpet in B $\flat$  2. The score is written in 4/4 time and consists of 13 measures. The key signature has two flats (B $\flat$  and E $\flat$ ). The melody is composed of eighth and quarter notes, with some measures containing rests. The score is divided into three systems: measures 1-6, 7-11, and 13. The final measure (13) ends with a double bar line. There are handwritten annotations: "fp" (fortissimo) above measure 5, and a right-pointing arrow above measure 11.

# Raspberry

HTMS

Trumpet in B $\flat$  2

1 2 3 4 5

6 7 8 9 10 11

12 13 14 15 16 17

18 19 20 21 22

23 24



Trumpet in B $\flat$  2

# The Hey Song

UPDATED 2014

High Five

Musical score for 'The Hey Song' for Trumpet in B $\flat$  2. The score is written in 4/4 time and consists of 31 measures. It begins with a treble clef and a key signature of one flat (B $\flat$ ). The first measure (1) contains a whole rest. Measures 2-4 contain a triplet of eighth notes. Measure 5 contains a half note. Measures 6-8 contain a half note. Measure 9 contains a half note. Measures 10-12 contain a half note. Measure 13 contains a half note. Measures 14-15 contain a half note. Measure 16 contains a half note. Measure 17 contains a half note. Measure 18 contains a half note. Measure 19 contains a half note. Measure 20 contains a half note. Measure 21 contains a half note. Measure 22 contains a half note. Measure 23 contains a half note. Measure 24 contains a half note. Measure 25 contains a half note. Measure 26 contains a half note. Measure 27 contains a half note. Measure 28 contains a half note. Measure 29 contains a half note. Measure 30 contains a half note. Measure 31 contains a half note. The score includes dynamic markings: *f* at measure 5, *ff* at measure 16, and *ff* at measure 25. It also includes performance instructions: 'To Coda' at measure 24, 'D.S. al Coda' at measure 25, and 'Coda' at measure 26. The score ends with a double bar line at measure 31.

Trumpet in B $\flat$  2

# Crazy Train

Updated 2014

Musical score for 'Crazy Train' for Trumpet in B $\flat$  2. The score is written in 4/4 time and consists of 13 measures. It begins with a treble clef and a key signature of one flat (B $\flat$ ). The first measure (1) contains a whole rest. Measures 2-4 contain a whole rest. Measure 5 contains a half note. Measure 6 contains a half note. Measure 7 contains a half note. Measure 8 contains a half note. Measure 9 contains a half note. Measure 10 contains a half note. Measure 11 contains a half note. Measure 12 contains a half note. Measure 13 contains a half note. The score includes dynamic markings: *f* at measure 5, *ff* at measure 6, and *ff* at measure 7. It also includes performance instructions: 'To Coda' at measure 24, 'D.S. al Coda' at measure 25, and 'Coda' at measure 26. The score ends with a double bar line at measure 13.

# Mortal Kombat

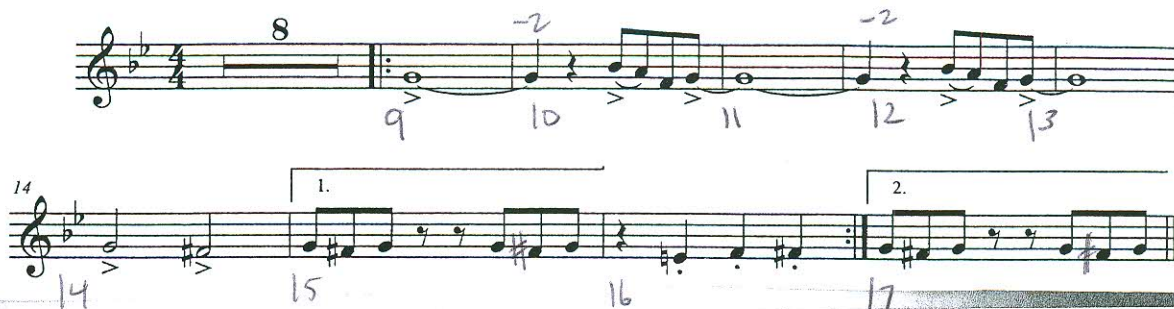
Trumpet in B $\flat$



# ESPN

Trumpet in B $\flat$  2

Updated 2014



# Na Na Na

Trumpet in B $\flat$  2

...Goobye



Trumpet in B $\flat$  2

# Seven Nation Army

General

